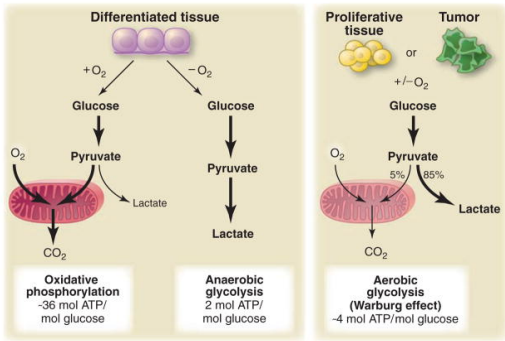


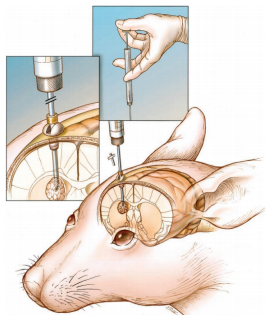
Hyperpolarized Magnetic Resonance Imaging Reveals Transformations in Pyruvate Metabolism Prior to Anatomic Changes in Patient-Derived Glioblastoma Models

Travis Salzillo

Session: Emerging and Preclinical Modalities: 07/29/2018 4:00PM — 6:00PM



Vander Heiden MG et al. *Science* (2009)



Lal et al. *J Neurosurg.* 2000

