

Reconstruction Algorithm Design for Mitigating the Orientation Dependent Conspicuity of Fiber-Like Signals in Digital Breast Tomosynthesis

University of Chicago

Sean Rose, Ingrid Reiser, Emil Y. Sidky, and Xiaochuan Pan

Breast Imaging Session, Tuesday 7/31 9:10am, Room 202

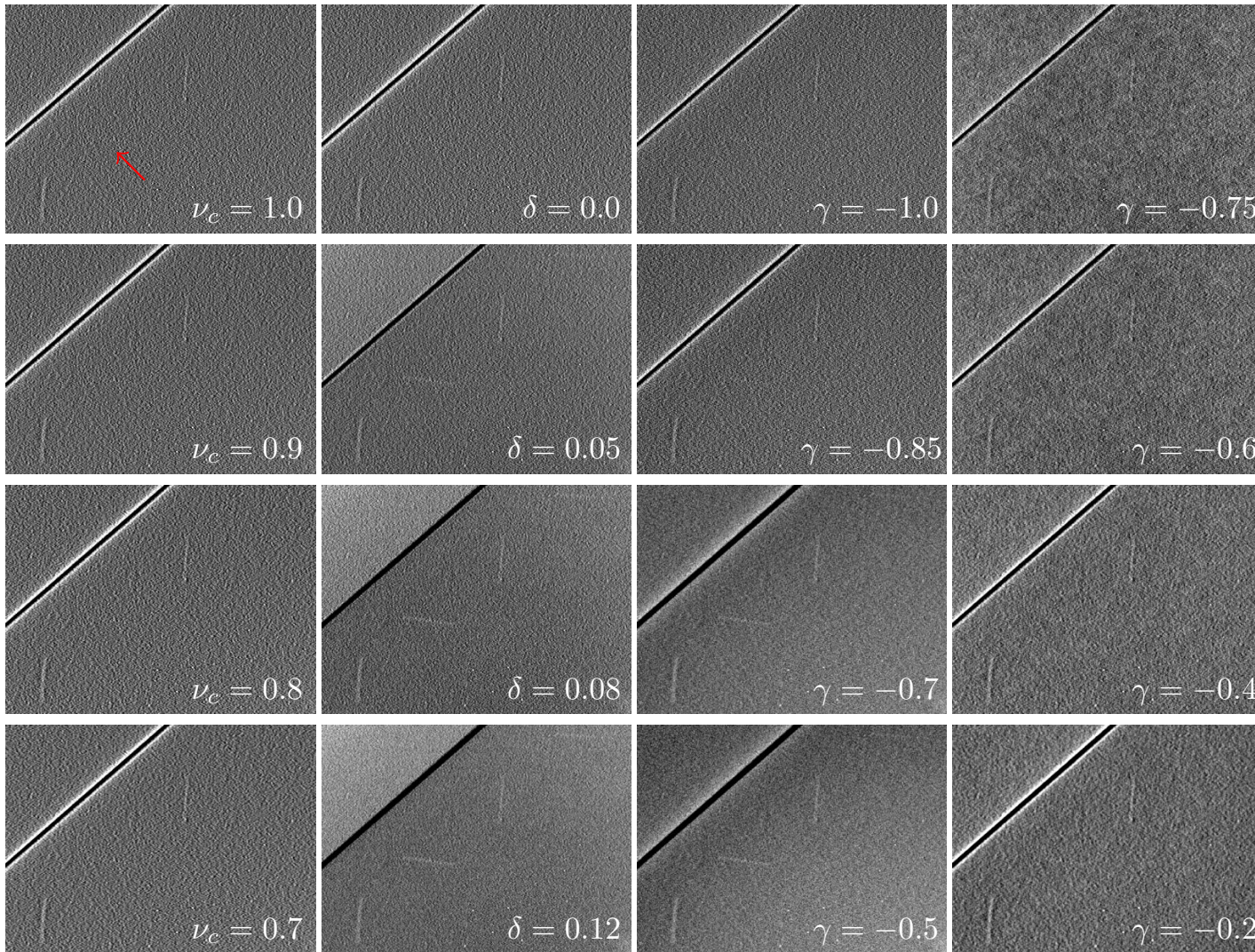
Reconstruction Algorithm:

FBP

mFBP

LSQI

LSQD



Increasing Regularization

