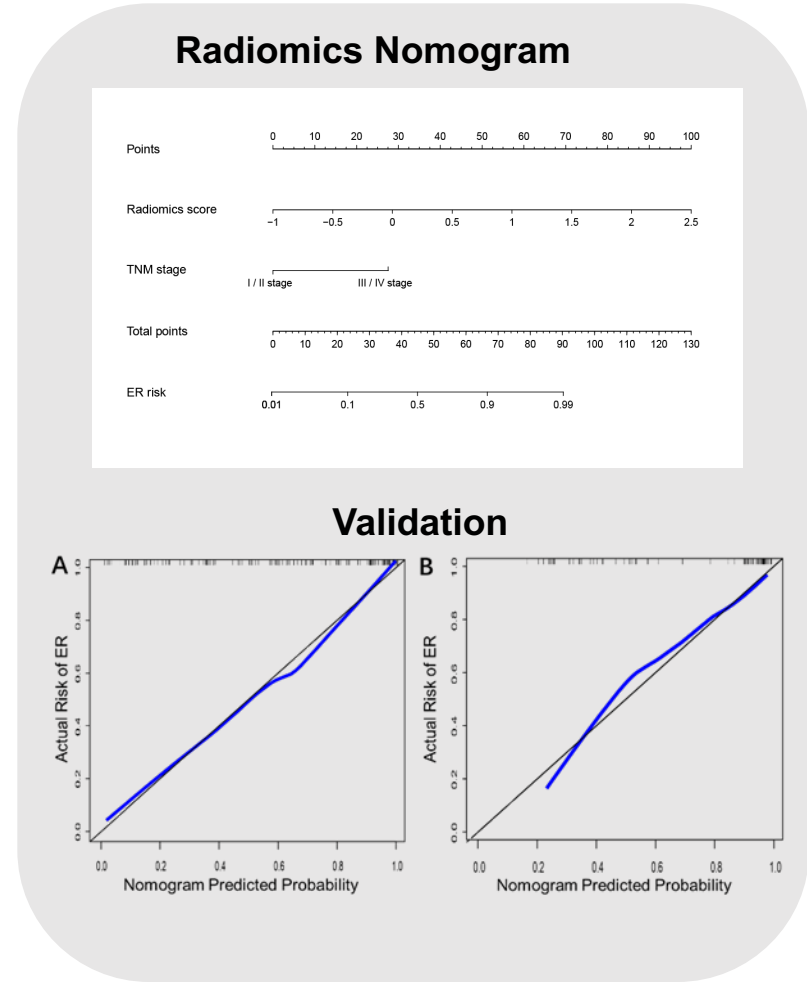
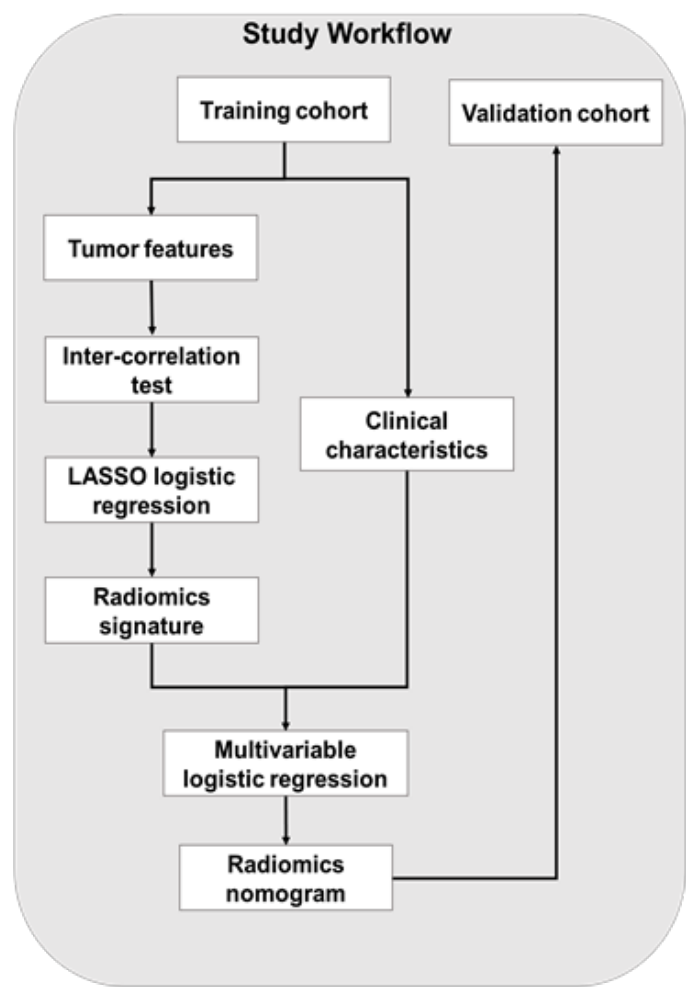
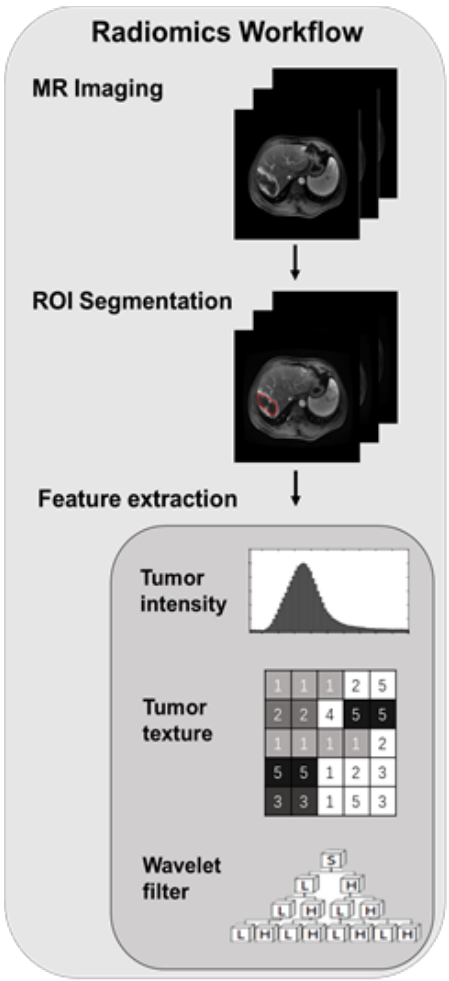


Preoperative Prediction of Early Recurrence in Intrahepatic Cholangiocarcinoma after Partial Hepatectomy



Presenting Author:
Lei Xu

Session Title:
Magnetic Resonance Imaging

Date:
08/01/2018

Session Time:
07:30 - 09:30 AM

In our study, a prediction model was developed using radiomics method to preoperatively stratify intrahepatic cholangiocarcinoma (ICC) patients undergoing surgical resection by risk of early recurrence, showing good discriminative performance in both training and independent validation set. The gain in ER prediction accuracy of the radiomics nomogram model incorporating the radiomics score and TNM stage was also investigated. The nomogram showed better performance than radiomics model. The promising results demonstrated the nomogram developed could provide an improved predictive value over conventional AJCC metrics, which would offer the potential to tailor treatment to individual patients, thereby substantially improving patient survival and quality of life.