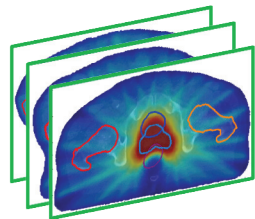


Fully Automated Configuration of An Algorithm for Automated Multi-Objective Treatment Planning

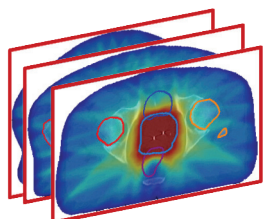
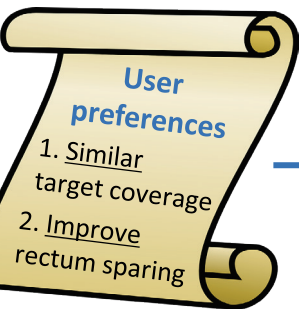
Rens van Haveren | August 1 | 10.15AM—12.15PM | Knowledge-Based Treatment Planning

Treatment plan database



Training set
96 patients

Relevant plan data acquisition



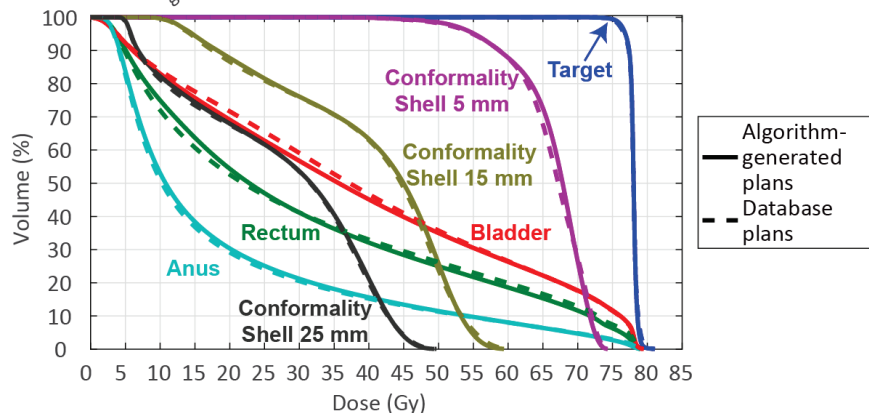
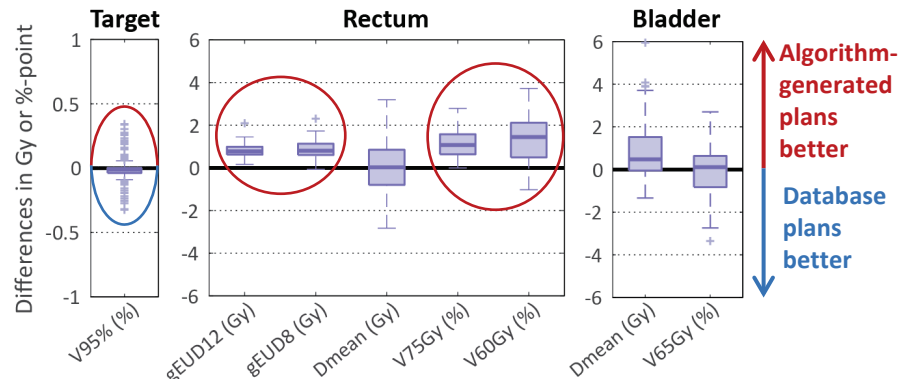
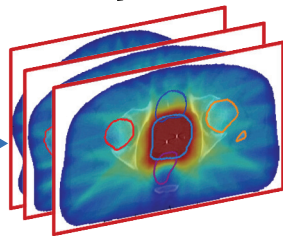
Test set
191 patients

Apply algorithm

Group configuration

Automated algorithm configuration

Plan comparison



Both the boxplots (upper figure) and mean DVHs (lower figure) show similar target coverage and improved high-dose rectum sparing