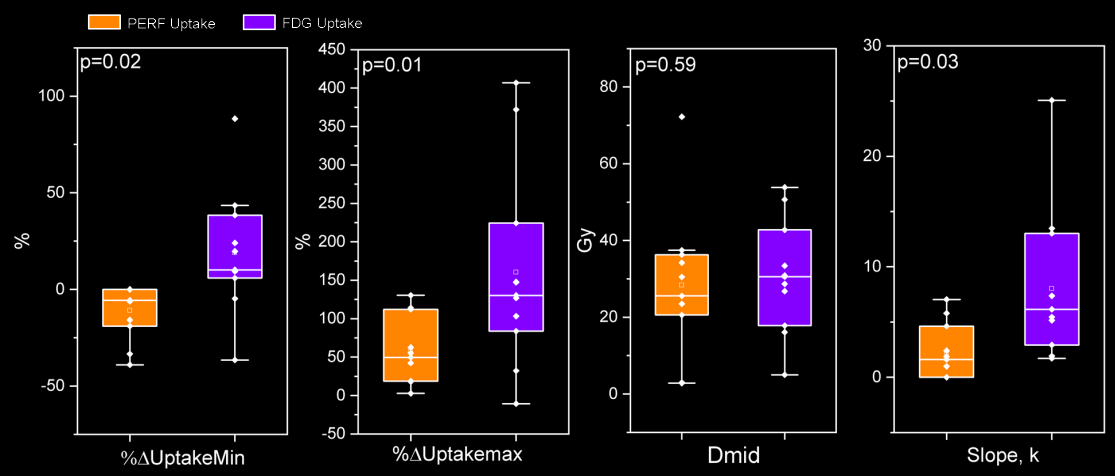
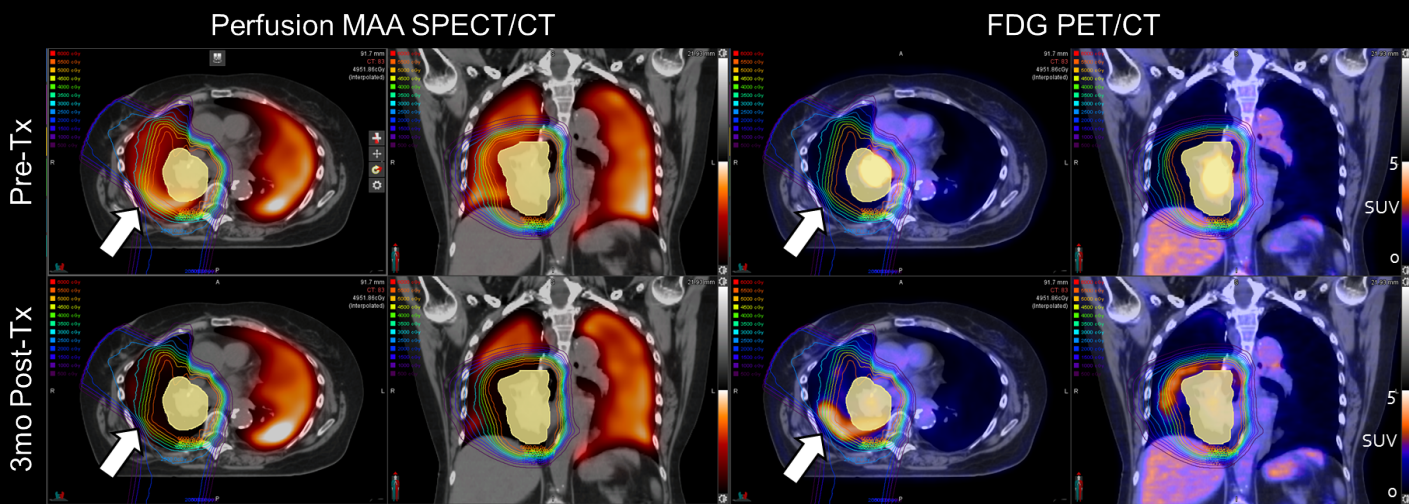
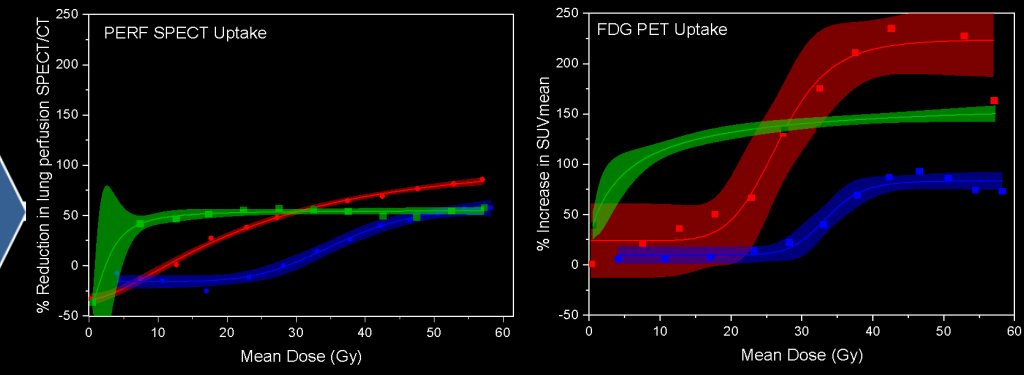
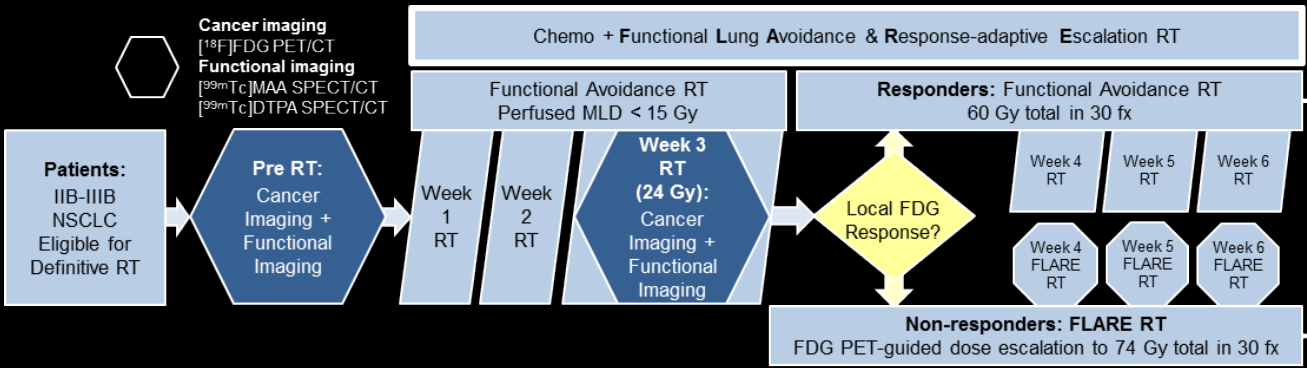


# Multiparametric regional radiation dose-response of normal lung on longitudinal MAA-SPECT/CT and FDG-PET/CT imaging of FLARE-RT protocol patients

Hannah Thomas

WED AUG 1, 2018 7:30AM-9:30AM

Longitudinal & Functional Imaging



White arrow: high baseline lung perfusion near high dose clinical target volume is spatially correlated to perfusion deficits and FDG inflammatory uptake 3 months post treatment.

$$\% \Delta Uptake(D) = \frac{\% \Delta Uptake_{min} - \% \Delta Uptake_{max}}{1 + (D/D_{mid})^k} + \% \Delta Uptake_{max}$$