

ACROBEAT

(Adaptive CaRdiac cOne BEAm computed Tomography)

Tess Reynolds, Chun-Chien Shieh, Paul J. Keall & Ricky T. O'Brien.

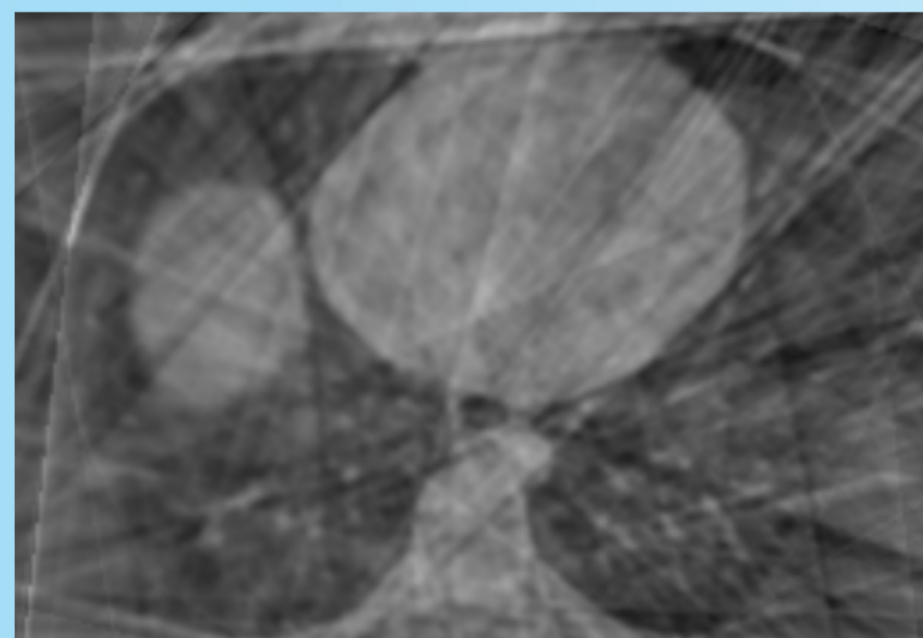
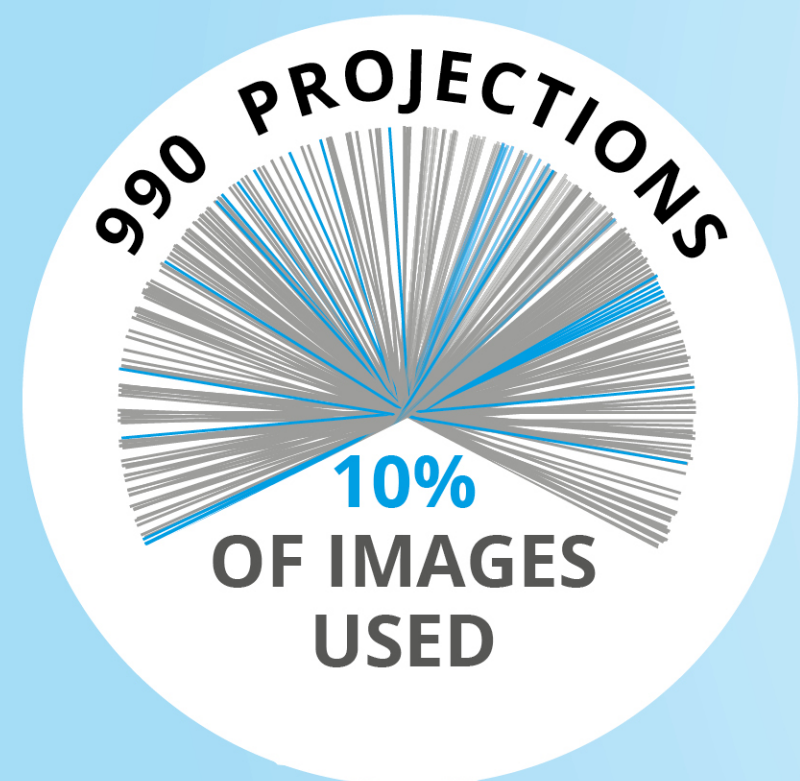
IMPROVING CARDIAC CBCT IMAGING USING THE PATIENT'S ECG SIGNAL

Joint Imaging-Therapy Scientific Session

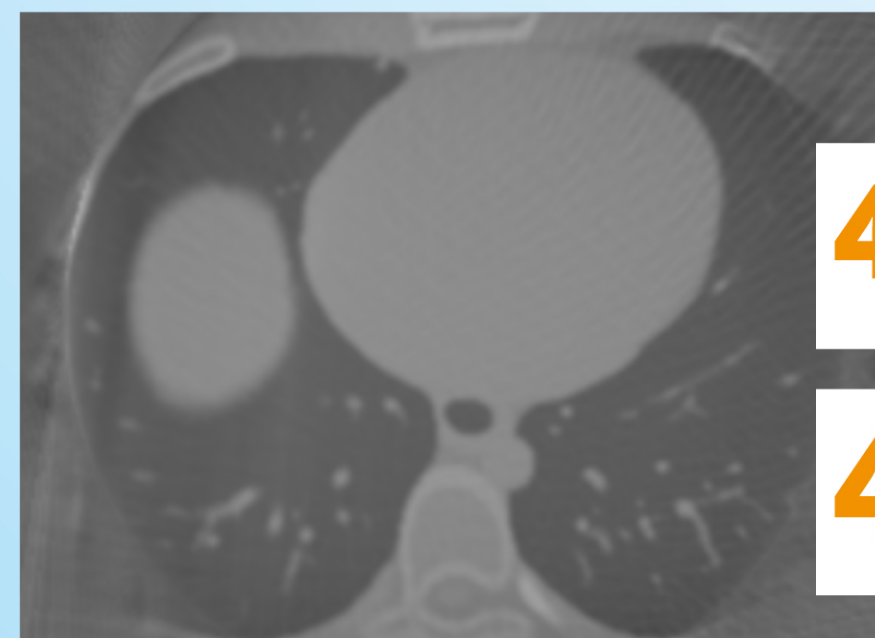
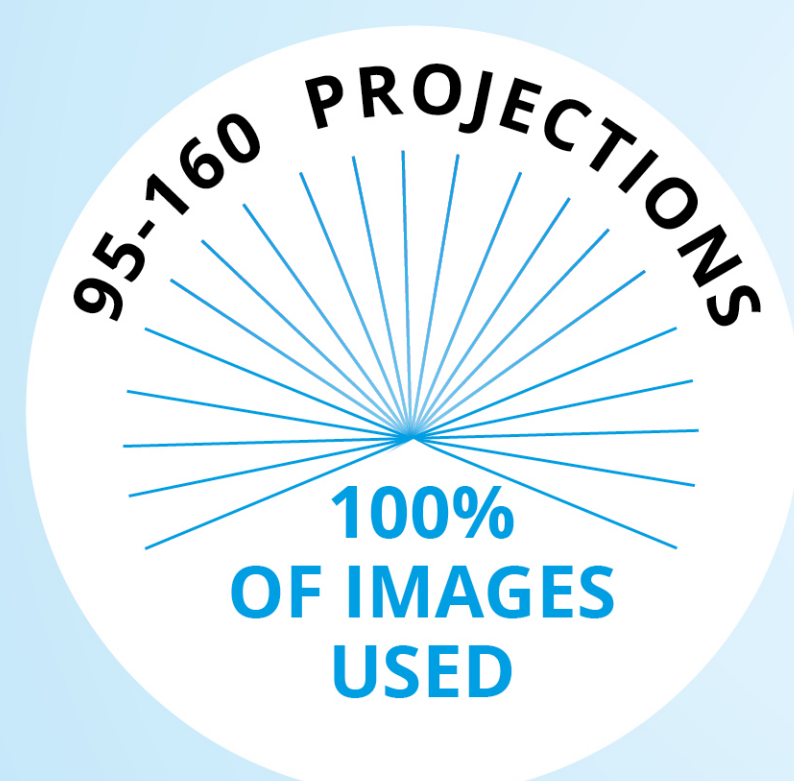
8/1/2018 7:30am – 9:30am

Karl Dean Ballroom B1

CONVENTIONAL

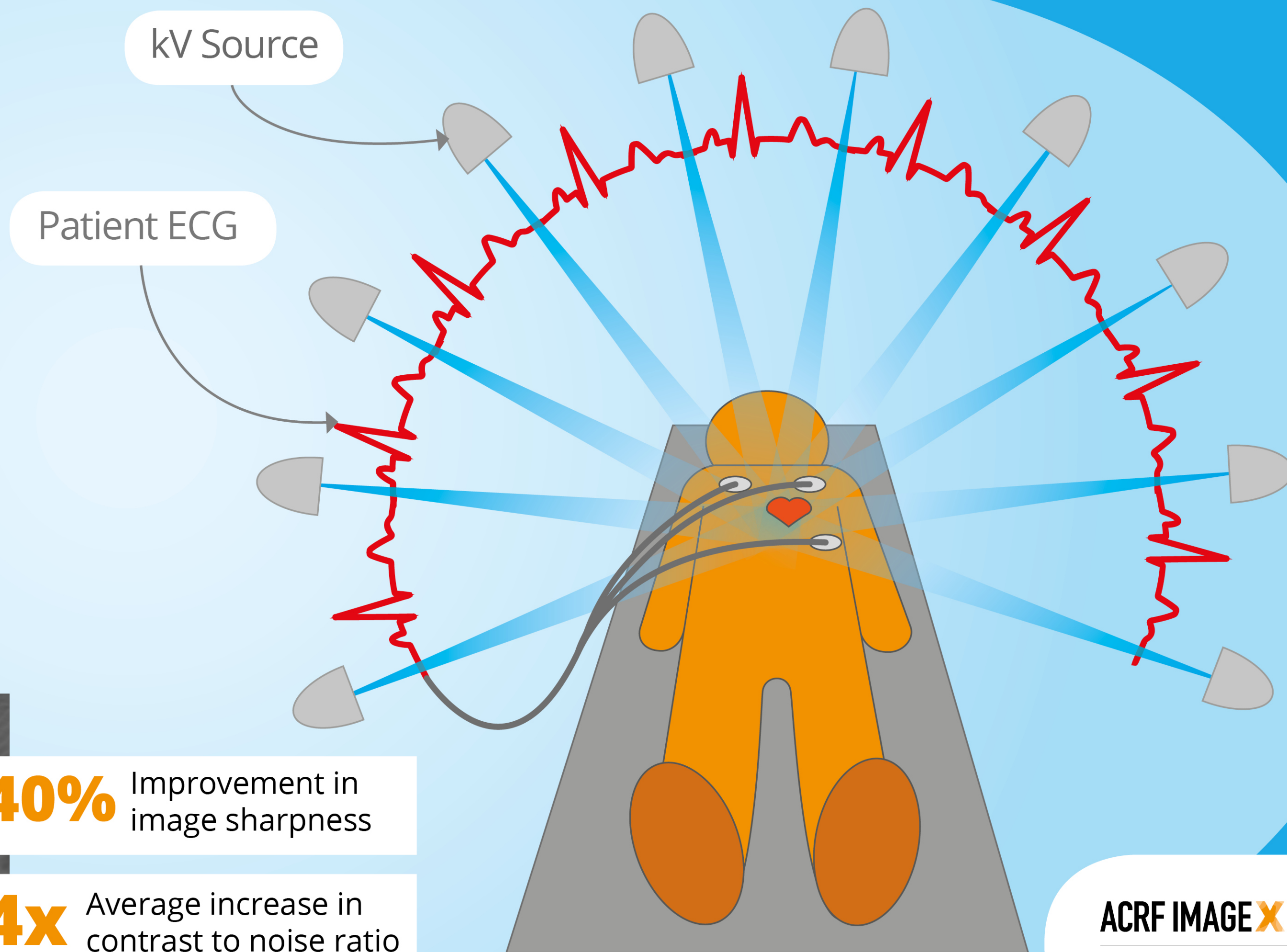


ACROBEAT



40% Improvement in image sharpness

4x Average increase in contrast to noise ratio



ACRF IMAGE X INSTITUTE

