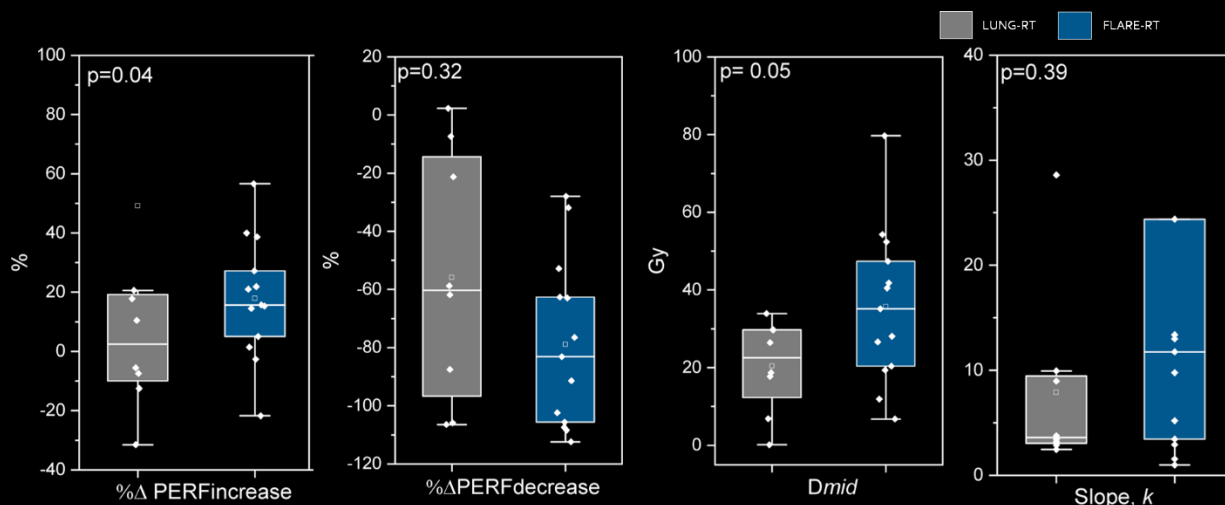
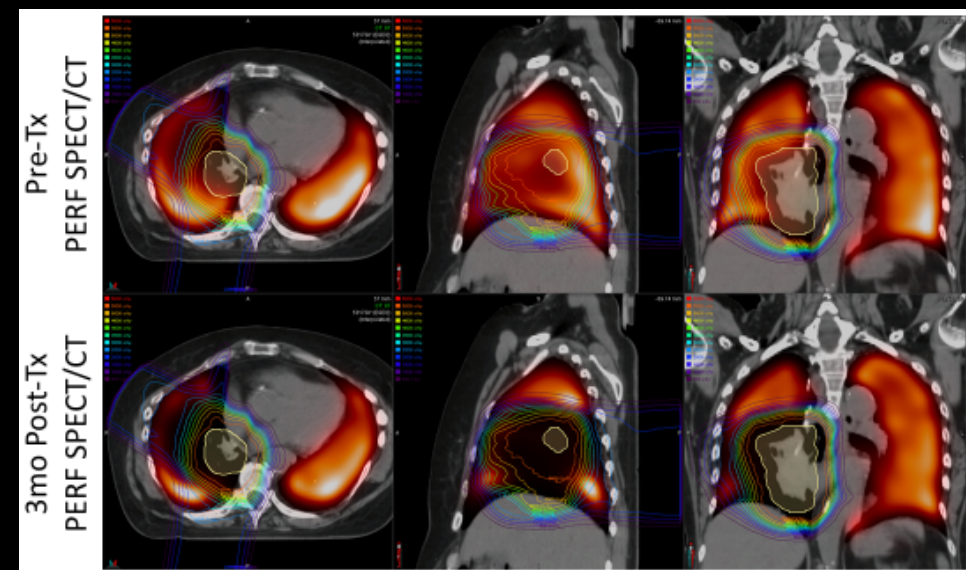
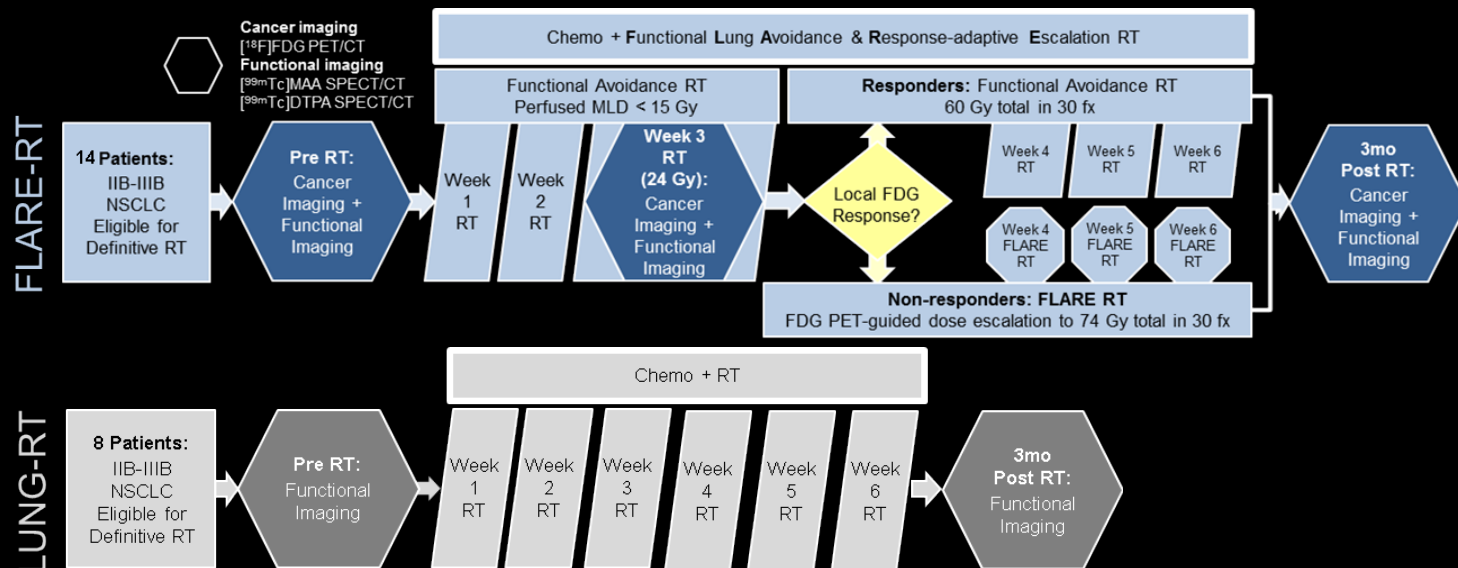


Comparison of Regional Lung Perfusion Response on Longitudinal MAA SPECT/CT in Lung Cancer Patients Treated with and without Functional Lung Avoidance Radiation Therapy

Hannah Thomas WED AUG 1, 2018 7:30AM-9:30AM Longitudinal & Functional Imaging



Increased perfusion at dose < 10 Gy observed in 36% of FLARE-RT patients compared to 0% of LUNG-RT patients.

$$\Delta PERF(D) = \frac{\% \Delta PERF_{increase} - \% \Delta PERF_{decrease}}{1 + \left(\frac{D}{D_{mid}}\right)^k} + \% \Delta PERF_{decrease}$$

