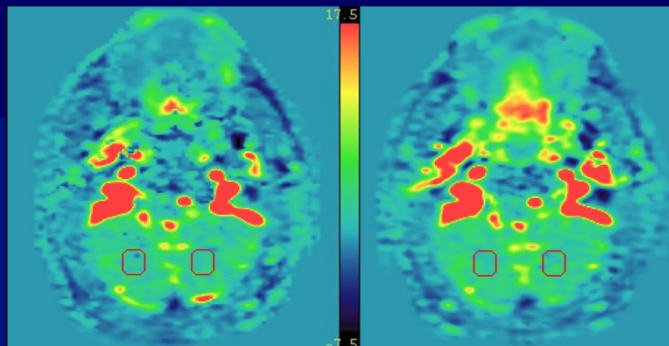
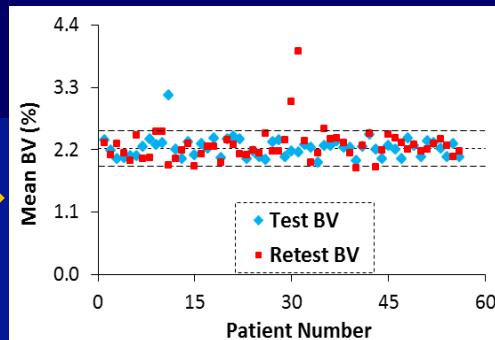


# “Quality Assessment and Repeatability Measurement On DCE-MRI-Derived Blood Volume in Individual Patients During a Clinical Trial”

To develop and evaluate a methodology and metrics for real-time QA of accuracy and precision of DCE-MRI derived blood volume (BV) in a phase-II randomized clinical trial for head and neck cancers.



Test- retest BV maps, with VOIs in normal cerebellum region (red)



Mean BV values plotted against patient numbers

A group mean and repeatability coefficient were used to detect BV map deviations of individual patients (n=3) at real time, which supports decision making and warrants success of the clinical trial.

Presenting Author: Madhava Aryal

Session Title: MRI

Date/Time: Wed., Aug.1<sup>st</sup>/7:30-9:30am